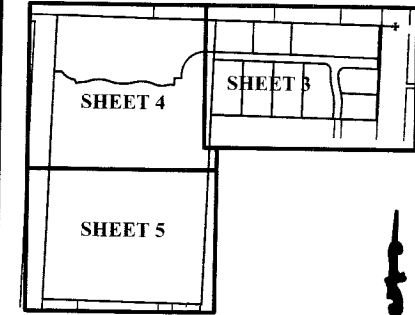


# ALDI PARK

BEING A REPLAT OF COUNTRY WEST AS RECORDED IN PLAT BOOK 40, PAGES 179 & 180, OF THE PUBLIC RECORDS OF PALM BEACH COUNTY, FLORIDA, LYING IN THE NORTHEAST ONE-QUARTER OF SECTION 25, TOWNSHIP 43 SOUTH, RANGE 41 EAST, VILLAGE OF ROYAL PALM BEACH, PALM BEACH COUNTY, FLORIDA ALONG WITH THE SOUTHEAST ONE-QUARTER OF THE NORTHWEST ONE-QUARTER OF THE NORTHEAST ONE-QUARTER OF SECTION 25, TOWNSHIP 43 SOUTH, RANGE 41 EAST, PALM BEACH COUNTY, FLORIDA

22



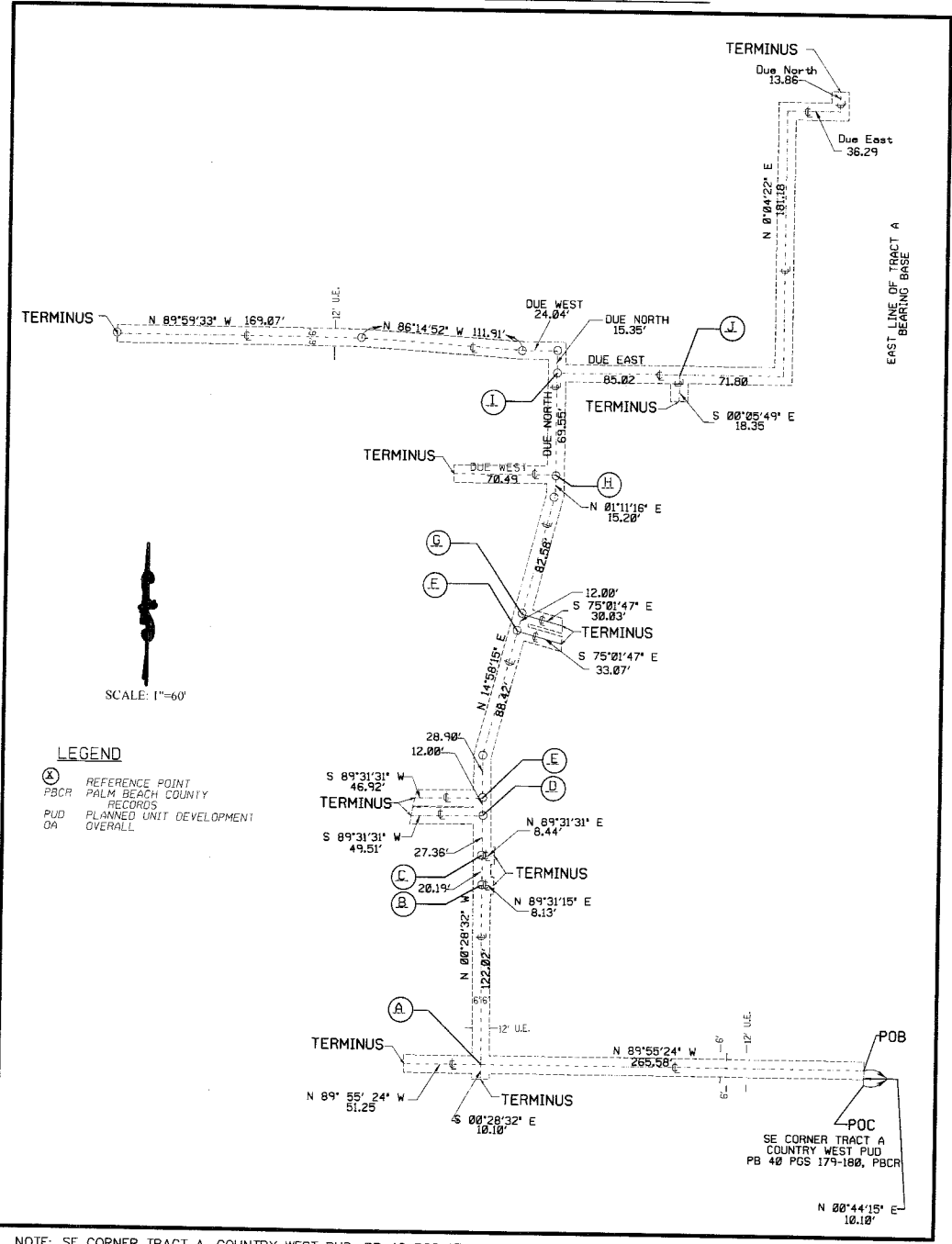
KEY MAP  
NOT TO SCALE

STATE OF FLORIDA  
COUNTY OF PALM BEACH  
THIS PLAT WAS FILED FOR  
RECORD AT \_\_\_\_\_ M.  
THIS \_\_\_\_\_ DAY OF \_\_\_\_\_  
A.D. 20\_\_\_\_ AND DULY RECORDED  
IN PLAT BOOK \_\_\_\_\_ ON  
PAGES \_\_\_\_\_ AND \_\_\_\_\_

SHARON R. BOCK  
CLERK AND COMPTROLLER

BY: \_\_\_\_\_  
DEPUTY CLERK

UTILITY EASEMENT DETAIL ORB 14578, PG. 1895



NOTE: SE CORNER TRACT A, COUNTRY WEST PUD, PB 40 PGS 179-180, PBCR NOW KNOWN AS SE CORNER PARCEL 10, ALDI PARK

UTILITY EASEMENT LEGAL DESCRIPTION ORB 14578, PG. 1895

12 FOOT WIDE UTILITY EASEMENTS BEING PORTIONS OF TRACT A, COUNTRY WEST PUD, AS RECORDED IN PLAT BOOK 40, PAGES 179 AND 180, IN THE PUBLIC RECORDS OF PALM BEACH COUNTY, FLORIDA, THE CENTERLINES MORE PARTICULARLY DESCRIBED AS FOLLOWS:

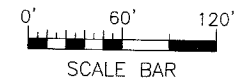
COMMENCING AT THE SOUTH EAST CORNER OF SAID TRACT A, COUNTRY WEST PUD, THENCE N 00°44'15" E ALONG THE EAST LINE OF SAID TRACT A (BEARING BASE) FOR A DISTANCE OF 10.10 FEET TO THE POINT OF BEGINNING;  
 THENCE NORTH 89°55'24" WEST FOR A DISTANCE OF 265.58 FEET TO A POINT HERINAFTER REFERRED TO AS REFERENCE POINT A;  
 THENCE NORTH 00°28'32" WEST FOR A DISTANCE OF 122.02 FEET TO A POINT HERINAFTER REFERRED TO AS REFERENCE POINT B;  
 THENCE NORTH 00°28'32" WEST FOR A DISTANCE OF 20.19 FEET TO A POINT HERINAFTER REFERRED TO AS REFERENCE POINT C;  
 THENCE NORTH 00°28'32" WEST FOR A DISTANCE OF 27.36 FEET TO A POINT HERINAFTER REFERRED TO AS REFERENCE POINT D;  
 THENCE NORTH 00°28'32" WEST FOR A DISTANCE OF 12.00 FEET TO A POINT HERINAFTER REFERRED TO AS REFERENCE POINT E;  
 THENCE NORTH 00°28'32" WEST FOR A DISTANCE OF 28.90 FEET;  
 THENCE NORTH 14°58'15" EAST FOR A DISTANCE OF 88.42 FEET TO A POINT HERINAFTER REFERRED TO AS REFERENCE POINT F;  
 THENCE NORTH 14°58'15" EAST FOR A DISTANCE OF 12.00 FEET TO A POINT HERINAFTER REFERRED TO AS REFERENCE POINT G;  
 THENCE NORTH 14°58'15" EAST FOR A DISTANCE OF 82.58 FEET;  
 THENCE NORTH 01°11'16" EAST FOR A DISTANCE OF 15.20 FEET TO A POINT HERINAFTER REFERRED TO AS REFERENCE POINT H;  
 THENCE DUE NORTH FOR A DISTANCE OF 69.55 FEET TO A POINT HERINAFTER REFERRED TO AS REFERENCE POINT I;  
 THENCE DUE EAST 85.02 FEET TO A POINT HERINAFTER REFERRED TO AS REFERENCE POINT J;  
 THENCE DUE EAST 71.80 FEET;  
 THENCE NORTH 00°04'22" EAST 181.18 FEET;  
 THENCE DUE EAST 36.29 FEET;  
 THENCE DUE NORTH 13.86 FEET TO THE TERMINUS.

TOGETHER WITH:  
 BEGINNING AT REFERENCE POINT A, THENCE SOUTH 00°28'32" EAST FOR A DISTANCE OF 10.10 FEET TO THE TERMINUS.  
 ALSO TOGETHER WITH:  
 BEGINNING AT REFERENCE POINT A, THENCE NORTH 89°55'24" WEST FOR A DISTANCE OF 51.25 FEET TO THE TERMINUS.  
 ALSO TOGETHER WITH:  
 BEGINNING AT REFERENCE POINT B, THENCE NORTH 89°31'15" EAST FOR A DISTANCE OF 8.13 FEET TO THE TERMINUS.  
 ALSO TOGETHER WITH:  
 BEGINNING AT REFERENCE POINT C, THENCE NORTH 89°31'31" WEST FOR A DISTANCE OF 8.44 FEET TO THE TERMINUS.  
 ALSO TOGETHER WITH:  
 BEGINNING AT REFERENCE POINT D, THENCE SOUTH 89°31'31" WEST FOR A DISTANCE OF 49.51 FEET TO THE TERMINUS.  
 ALSO TOGETHER WITH:  
 BEGINNING AT REFERENCE POINT E, THENCE SOUTH 89°31'31" WEST FOR A DISTANCE OF 46.92 FEET TO THE TERMINUS.  
 ALSO TOGETHER WITH:  
 BEGINNING AT REFERENCE POINT F, THENCE SOUTH 75°01'47" EAST FOR A DISTANCE OF 33.07 FEET TO THE TERMINUS.  
 ALSO TOGETHER WITH:  
 BEGINNING AT REFERENCE POINT G, THENCE SOUTH 75°01'47" EAST FOR A DISTANCE OF 30.03 FEET TO THE TERMINUS.

THE SIDE LINES FO THE LAST SIX COURSES TO BE LENGTHEN OR SHORTEN TO TERMINATE AT THE SIDE LINES OF THE 60 FOOT ROADWAY EASEMENT.  
 ALSO TOGETHER WITH:  
 BEGINNING AT REFERENCE POINT H THENCE DUE WEST FOR A DISTANCE OF 70.49 FEET TO THE TERMINUS.  
 ALSO TOGETHER WITH:  
 BEGINNING AT REFERENCE POINT I, THENCE DUE NORTH FOR A DISTANCE OF 15.35 FEET;  
 THENCE DUE WEST FOR A DISTANCE OF 24.04 FEET;  
 THENCE NORTH 86°14'52" WEST FOR A DISTANCE OF 111.91 FEET;  
 THENCE NORTH 89°59'33" WEST FOR A DISTANCE OF 169.07 FEET TO THE TERMINUS.

ALSO TOGETHER WITH:  
 BEGINNING AT REFERENCE POINT J, THENCE SOUTH 00°05'49" EAST FOR A DISTANCE OF 18.35 FEET TO THE TERMINUS.

SAID LAND SITUATE IN PALM BEACH COUNTY, FLORIDA AND CONTAIN 20,405 SQUARE FEET.



- LEGEND:**
- ⊕ = CENTERLINE
  - C.P.B. = COUNTY OF PALM BEACH
  - D.B. = DEED BOOK
  - D.E. = DRAINAGE EASEMENT
  - L = LENGTH
  - LB = LICENSED BUSINESS
  - LLC = LIMITED LIABILITY CORPORATION
  - ORB = OFFICIAL RECORDS BOOK
  - ⊔ = PROPERTY LINE
  - P.B. = PLAT BOOK
  - PCP = PERMANENT CONTROL POINT
  - PG. = PAGE
  - POB = POINT OF BEGINNING
  - POC = POINT OF COMMENCEMENT
  - PRM = PERMANENT REFERENCE MONUMENT
  - PSM = PROFESSIONAL SURVEYOR & MAPPER
  - R = RADIUS
  - R/W = RIGHT OF WAY
  - O.R.B. = OFFICIAL RECORD BOOK
  - U.E. = UTILITY EASEMENT
  - Δ = DELTA ANGLE
  - = FOUND 4"x4" CONCRETE MONUMENT
  - = SET 5/8" IRON ROD IN CONCRETE WITH ALUMINUM DISK STAMPED "ERDMAN ANTHONY PRM LB 7334"
  - = SET MAG NAIL WITH DISK STAMPED "PCP LB 7334"
  - ⊕ = SECTION CORNER

SHEET 6 of 7

**ERDMAN ANTHONY**

1402 ROYAL PALM BEACH BLVD., BLDG 500  
 ROYAL PALM BEACH, FLORIDA 33411  
 TELEPHONE 561-753-9723 FAX 561-753-9724  
 EB-25912 LB-7334